



Loring Greenway Association

2011

ANNUAL REPORT

loringgreenway.org



CONTENTS

3	LETTER TO OUR STAKEHOLDERS
4	HISTORY
5	2011 BOARD ORGANIZATION
5	PUBLIC PARTNERS
6	COMMITTEES
	Communication
	Events
	Gardening
	Contracted Services
	Marketing and Fundraising
9	RECOGNITION
9	VOLUNTEERS
	Events
	Gardening
11	2011 FINANCIAL REPORT
12	2012 OPERATING & REVENUE BUDGETS
13	LORING GREENWAY DONORS

LETTER TO OUR STAKEHOLDERS

2011 was a banner year of superlative awards and an exciting re-visioning for the future of Loring Greenway.

Awards

The awards began in January when the Minneapolis Downtown Improvement District (DID) honored LGA with its **2010 Greening Award for Loring Greenway Beautification -- Community Involvement**. This was the first year that DID's Greening Committee presented awards, celebrating initiatives that establish a greener downtown

Last May, a second award was bestowed on LGA. Metro Blooms declared LGA the winner of **2010 Best Public Garden Award**. Metro Blooms' mission is to promote and celebrate gardening, to beautify our communities and help heal and protect our environment. Its original program, Blooming Boulevards, grew out of the Committee on Urban Environment (CUE), established by the Minneapolis City Council in 1968. The award was presented to LGA on May 14th at Kenny community school.

Re-Imagining Loring Greenway's Future: Step One

The noted landscape architect firm, Damon Farber, graciously volunteered to develop a plan for improving the Greenway. At the organization's annual meeting in February, it presented detailed schemes for adding dramatic lighting, flexible seating, colorful banners and directional signage. This exciting plan can be viewed on our website: www.loringgreenway.org

Re-Imagining Loring Greenway's Future: Step Two

During November's board meeting, LGA's Directors took time to review where we are and where we need to be going forward. The board noted that in three short years 90+ gardeners have greatly enhanced the Greenway's landscape. It also has successfully initiated new added attractions such as the Oktoberfest. And LGA now has over 170 donor units. The good news is that all this has been accomplished with volunteers; the challenging news is that board members are close to burn out -- we need to find a way to for LGA to become more sustainable.

In the face of this challenge the board concluded: "We want to re-imagine what Loring Greenway could and should become, and what it will take to get there." So on Saturday, December 19th, a board retreat generated close to a hundred ideas on what it would take for Loring Greenway to become a regionally recognized premier green connector, energizing residents and visitors year around. The ideas grouped into six categories: (1) What The Greenway would look like, (2) Programming, (3) Management/operations, (4) Creating more visible linkage between Nicollet Mall, Loring Park, & beyond, (5) Branding & marketing, (6) Immediate actions.

We believe that you will be pleased in these developments. With your generous support we look forward to 2012 as a key stepping stone to an even greater future.



HISTORY

The Loring Greenway is a heavily used Minneapolis pedestrian walkway between the lower end of Nicollet Mall and the residential neighborhoods that surround Loring Park. It is a product of Minneapolis' mid-twentieth century urban renewal that began in the late 1950s and continued into the 1970s. Constructed in an area of Minneapolis in desperate need of renovation, the Loring Greenway was very successful in attracting a variety of residential and commercial developments. As such, it reflects important post-World War II community planning and development trends.

Together with Peavey Plaza, the Loring Greenway is an effort to connect the system of parks and boulevards known as the Grand Rounds. The Loring Greenway is an example of the modern style of urban plaza design that represented a new urban park aesthetic. Both the Loring Greenway and Peavey Plaza were designed by noted landscape architect M. Paul Friedberg. The defining features of their design include the use of concrete to create hard space, water features, and multi-levels with green plantings.

But nothing lasts forever. By the turn of the millennia, many aspects of the Loring Greenway were showing their age. Many walkway tiles were cracked or patched with unsightly asphalt, many plantings had died and were not replaced, and its architectural and artistic effects were looking run-down. Something had to be done or the Loring Greenway would soon become a liability to both the city and its neighborhood.

For many years residents worked on Greenway improvements as a committee of the Citizens for a Loring Park Community (CLPC), the neighborhood organization. Using a Neighborhood Revitalization Program (NRP) Phase I grant of \$60,000 dollars, a new playground was constructed and lighting was improved to make the Greenway safer at night. They also sought to repair the Greenway's crumbling walkways and to renew its plantings and fountains. Much of this was accomplished during the summers of 2007 and 2008, at a cost to the city of over \$2.8 million. But clearly, much more effort and money would be required to enhance and maintain the Greenway over the coming years.

Meanwhile, the city of Minneapolis began to experience severe financial problems and continues to do so today. While the city is able to pay for the basic upkeep of the Loring Greenway, there were important questions that needed to be answered. Who would buy and plant the hundreds of flowering plants that have made the Greenway so attractive in past years? Who would see to the weeding of its plantings? Who would push for its enhancement through better lighting and art works? And who would coordinate the neighborhood events envisioned for the Greenway, such as dog parades, garage sales, art fairs, and performances?

To answer these questions, the original citizens group, with the help of city Councilwoman Lisa Goodman, evolved into The Loring Greenway Association (LGA), a partnership with the city with a goal of making the Greenway one of the premier pedestrian walkways in the nation. The LGA consists of a board of directors who represent the major commercial and residential properties in the area plus an active group of volunteers. City officials regularly work with the LGA to formulate and achieve various goals.

As the result of its initial fund raising activities and hundreds of hours of volunteer time, the LGA annually plants more than 1800 flowering plants. It saved the Greenway's many ash trees from the Emerald Ash Borer beetle through an inoculation program. It has an excellent website that will help build and maintain a community of volunteers focused on the Loring Greenway.

During the months in which the Loring Greenway Association was being formed, its finances were managed under the auspices of the CLPC, but as of 2009 LGA now has independent status as a 501c3 non-profit organization. This means that the contributions it receives are tax-deductible.

2010 was another busy year for the LGA. In addition to continued active participation by volunteers in gardening activities, two events on the Loring Greenway were sponsored by the LGA: a dog parade on National Night Out and a Fall Oktoberfest featuring food, music and games. Both events were well attended. There were also several informal evenings of croquet.

In 2011, the LGA received awards from the Minneapolis Downtown Improvement District and Metro Blooms honoring "the volunteers of the Loring Greenway Association for their creative and tireless efforts in transforming the Loring Greenway into one of the most beautiful walkways in the City." The noted landscape architecture firm Damon Farber stepped forward to develop a plan for adding dramatic lighting, flexible seating, colorful banners and directional signage.

2011 BOARD ORGANIZATION

Home Owner Association Representatives

1225 LaSalle: Kristin Berns
Greenway Gables: Bess Gold
Loring Green East: Pat Davies
Loring Green West: Fred Aden
Loring Way: Paula Vesely

Residential & Commercial Building Representatives

110 Grant: Rick Bethke
Eitel Apartments and Loring Park Apartments: Megan McNulty
Hyatt Hotel: Terry Preese

Members at Large

Kay Constantine (Loring Green West)
Ray Harris (Loring Way)
Merry Keefe (Loring Way)
Doug Wallace (Loring Way)
Sally Westby (Greenway Gables)

OFFICERS

President: Merry Keefe
Vice-President: Doug Wallace
Secretary: Fred Aden
Treasurer: Paula Vesely

PUBLIC PARTNERS

A unique collaborative arrangement has been established between the Loring Greenway Association, the City of Minneapolis and the Minneapolis Park and Recreation Board in relation to the management and maintenance of Loring Greenway.

The City of Minneapolis will continue to maintain the hard surfaces – the sidewalks and fountains and sitting areas – and will be responsible for snow removal, grass cutting and watering of all plants and trees.

The Minneapolis Park and Recreation Board will continue to be responsible for trimming, pruning, and removal of trees.

Loring Greenway Association will be responsible for the fertilization, treatment of all trees, and planting of new trees. LGA is also responsible of maintenance of existing plants, purchase, and planting of new annuals and perennials, all weeding, trimming, and mulching.

This three-party, working relationship has worked successfully in 2011 and is expected to continue indefinitely.

COMMITTEES

Communication

During 2011 the Communication Committee

- Sent email messages to stakeholders about key deacons of LGA Board activities
- Coordinated a spring assembly and mailing of a new donor solicitation letter produced by the finance committee
- Continued to update the web site (loringgreenway.org) with news about gardening and other activities on the greenway
- Added several new albums to the website's photo



■ Home

.....
About

.....
News

.....
Events

.....
Photo Gallery

.....
Gardening

.....
Volunteering

.....
Thanks

.....
The Future

.....
Documents

.....
Contacts

The Loring Greenway is a pedestrian walkway that stretches from the Nicollet Mall near Peavey Plaza to the Berger Fountain in Loring Park. It is a landscaped urban passage used by thousands of people every day as they commute between Minneapolis' busy downtown and the residential areas surrounding Loring Park.

The Loring Greenway Association is a registered 501(c)(3) not-for-profit organization consisting of people who live on or near the Greenway. We work with the city, volunteers and generous contributors to preserve and enhance the plantings and hardscape. We have a gardening committee led by experienced gardeners and we enjoy the professional expertise of many of our directors and volunteers.

Can you join us in this effort? You bet! [Contact us.](#)



Website design by the

Spangler Design Team

Loring Greenway Association is a 501(c)(3) not-for-profit organization
P.O. Box 582031 Minneapolis, MN 55458-2031
©2010 Loring Greenway Association



Events

An events committee was formed in 2010 to encourage residents to use and enjoy the Greenway and to build camaraderie and neighborhood spirit. Thirteen residents, representing nearly every building on the Greenway, currently serve on the committee

1) Building on its initial success in 2010, the 2nd annual Loring Greenway Oktoberfest was held on Oct 1 attended by 200 residents, family and friends.

- In addition to food and camaraderie, the event included the first annual Duck Race in the Loring Greenway fountain!
- Thirty volunteers donated over 300 hours to planning and participating in the event and over \$300 in pro bono expenses.
- Prizes were donated by the following local establishments: American Burger Bar, Aveda Sanctuary, Brits, Buca di Bepo, Café Luxx, Capital Grille, Crave, Groceries & Deli on Harmon, Joe’s Garage, Kowalski’s, La Belle Vie, the Lotus, Loring Kitchen, Lunds, Solera, Starbucks and Stay Fit at the Hyatt
- CVS Pharmacy, Caribou Coffee, and Dunn Brothers generously donated hot and cold beverages

2) Discussion was initiated with local arts institutions regarding collaboration on artistic, community and musical endeavors for 2012.

Gardening

Stunning! The Greenway has never looked so beautiful! A perfect growing season, hundreds of dedicated volunteer hours, and a legacy of excellent design resulting in perennials developing in all their glory – all this made for a season to celebrate.

Gardening Highlights

- On Memorial Day weekend, 36 volunteers added 2,335 plants to the Greenway including 1,779 annuals in 445 pockets in the nine berms, nine round planters, the entrance garden and throughout the Greenway.
- The Garden Committee organized eight monthly Saturday gardening events bringing together resident-volunteers from all along the Greenway. These efforts were supplemented by additional midweek gardening events for special projects such as transplanting hostas, removal of snow-on-the mountain, and pruning shrubs.
- Greenway changes included adding 556 perennials to the Nicollet/Hyatt end of the Greenway, planting a perennial garden across from 110 West Grant’s back entrance, and greatly improving the space by Loring Way. The Loring Way Condo association made a special contribution of \$1,000 for 100 perennials to create a unique woodland garden. Loring Way volunteers also transformed the Grant Street Spur (aka Don’s Alley) into a charming walkway with a golf course quality lawn.
- Volunteers also added shrubs (14 Isanti Dogwood, 4 Taunton Yews, 3 Dwarf Ninebark, 3 Ruby Spice Clethra) to replace rabbit-damaged plants.



Resources

- A team of 65 volunteers worked more than 1,000 hours maintaining the gardens. In addition to the scheduled events, many volunteers worked weekly to groom and water the planters, weed, plant, deadhead, remove sticks and pick up trash.
- Our partnerships insured our success. We received consultant help from Hennepin County Master Gardeners and Same Day Gardens; mulch, shrub and tree care from Rainbow Treecare; lawn and sidewalk care from the City of Minneapolis Public Works; and tree pruning from the Minneapolis Park Board.

- In addition, we received donations from Greenway residents of Hostas and Autumn Joy Sedum , and from the Park, we received sedum and mums.
- The Hyatt donated outdoor storage for the plant material, use of their banquet room and provided refreshments for the Memorial Day planting weekend.

Challenges for 2012

- While we celebrate a great season, we remain aware of opportunities for improvement. We're developing new strategies for the north side of the Willow Street entrance where nothing seems to want to grow. The area outside of 110 Grant needs serious work, and depending on funding, we hope to add shade and wind tolerant perennials.
- Our battle against the Emerald Ash Borer continues with inoculation of 23 ash trees.



Contracted Services

LGA's largest budget item is a contract with Rainbow Treecare. Readers of this report may be curious about the services that this horticultural firm provides for Loring Greenway.

Rainbow Treecare has an excellent reputation for its expertise in care for trees, shrubs and other landscape work. Its consulting arborist who has primary responsibility for Greenway services is recognized as one of the top professionals in his field. His credentials include a B.S. in Forest Resources from the University of Minnesota. He is also an ISA Board-Certified Master Arborist.

The services that Rainbow Treecare provides on Loring Greenway include the following:

- Spring top dress mulching
- Perennial and annual bed fertilization
- Pruning of shrubs
- Tree and shrub fertilization
- Inoculating ash trees to prevent the invasion of the Emerald Ash Borer

Rainbow Treecare works in concert with the chief of forestry of the MPRB, the agency that has responsibility for all trees on public lands in Minneapolis, including the Greenway.

Marketing & Fundraising

Fundraising activities for 2011 included the following

- In February, 2010 donors received materials asking them to continue contributing. The solicitation letter urged contributors to increase their levels of giving.
- In March, a letter was mailed to over 650 residents who were not contributors. As a result several new people joined as donors.
- In May, the board sponsored a "Donor-Thank-You" event hosted at Loring Green West. Over 70 donors attended. They were treated to a presentation by the Damon Farber landscape architecture firm that featured plan for enhancing lighting, providing seating, directional signage and banners on Loring Greenway.
- In the fall, condominium association board representatives personalized "asks" for residents to renew gifts for LGA..

RECOGNITION

LGA received two awards in 2011 for its outstanding community involvement and greening of a public space.

(1) On January 12, 2011 the Downtown Improvement District (DID) presented awards for outstanding greening sites in downtown Minneapolis. The presentation of LGA's award was made by David Wilson of Accenture, who is the chair of DID's Greening Committee. The committee instituted an annual Greening Recognition program. Its jury walked all over downtown and selected the best examples of greening, ranging in scale from small pots at building entrances to large park areas. The award was made to LGA for "2010 Greening Award for Community Involvement for Loring Greenway Beautification."

(2) Metro Blooms has declared LGA the winner of 2010 Best Public Garden Award. Metro Blooms' mission is to promote and celebrate gardening, to beautify our communities and help heal and protect our environment. Its original program, Blooming Boulevards, grew out of the Committee on Urban Environment (CUE), established by the Minneapolis City Council in 1968.

Each year it selects outstanding gardening efforts in several categories. The award was presented on May 14th.

VOLUNTEERS

The Loring Greenway Association could not exist without volunteers. In 2011, volunteers contributed nearly 2,000 hours to events, gardening and administration.

EVENTS VOLUNTEERS

1225 LaSalle

Tracy Karney
Rosemarie Ryweck
Marsha Weidenhammer

Loring Green East

Jack Davies
Pat Davies
Florence Ostrom
Don Ostrom

Greenway Gables

Liz Cutter
Rich Demers
Lois Demers
Bess Gold
David Goodman
Kirby Goodman
Cheryl LaRue
Paul LaRue
Jennifer Scholler
Mike Troje
Sally Westby
Jon Westby
Mia Westby
Perry Wilson

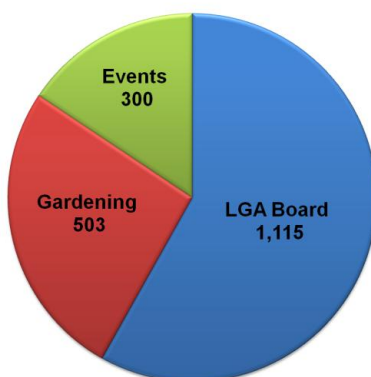
Loring Green West

Fred Aden
Kay Constantine
Leola Furman
Susan Lasoff
Ronan McCaa
Wanda McCaa
Sylvia Sabo
Nancy Stennes
Kay Thyr

Loring Way

Richard Anderson
Donovan Brausen
Ellen Dubuque
Peggy Hunter
Merry Keefe
Paula Vesely
Doug Wallace

2011 VOLUNTEER HOURS



GARDENING VOLUNTEERS

1200 on the Mall

Dzintra Dombrovskis
Luann Johnson

1225 LaSalle

Gary Blegstad
Herb Cheever
Sydna Cheever
Ray Connelly
Richard Evidon
Jerri Sudderth
Kurt Weidenhammer
Marsha Weidenhammer

Greenway Gables

Nettie Andrews
Bess Gold
Jennifer Schoenzeit Scholler
Josh Scholler
Jon Westby

Loring Green East

Nancy Anderson
Pat Davies
Nancy Miller
Dick Sandberg
Jan Sandberg
Diana Ursin
Tom Ursin

Loring Green West

Fred Aden
Hal Chader
Maryfaith Fox
Carol Johnson
Bill Soth
Roxanne Soth
Marcia Sullivan

Loring Way

Richard Anderson
Julie Ayer
Donovan Brausen
Don Davies
Ellen Dubuque
Lee Frelich
Mark Ginther
Sherri Ginther
Elly Haidos
Betty Heefner
Peggy Hunter
Merry Keefe
Cindy Quehl
Grace Schneider
Kevin Smith
Janet Sterling
Marcia Stout
Jean Toll
Doug Wallace

Other

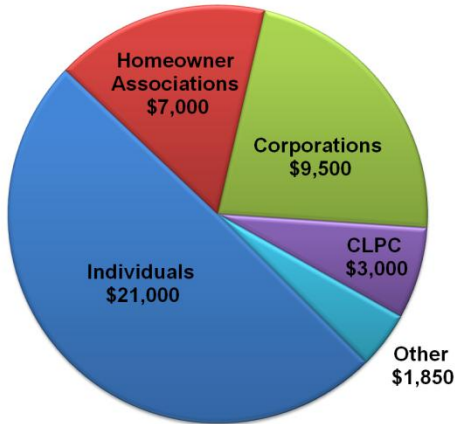
Sherry Brooks
Sandy Mayo
Tamara Northern



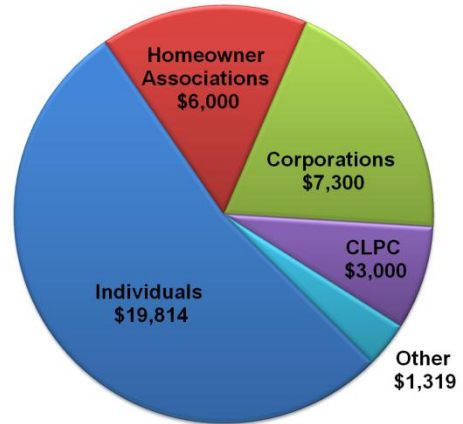
2011 FINANCIAL REPORT

The Association started the year with just over \$6,000 in the bank. Contributions for the year from individuals totaled nearly \$20,000 and from businesses and homeowner associations totaled over \$13,000., somewhat less than revenues anticipated in the 2011 budget. The Association raises nearly all of its revenues from private donors. The neighborhood association, Citizens for a Loring Park Community (CLPC) subsidized \$3,000 in LGA costs for Emerald Ash Borer treatment.

2011 REVENUE BUDGET

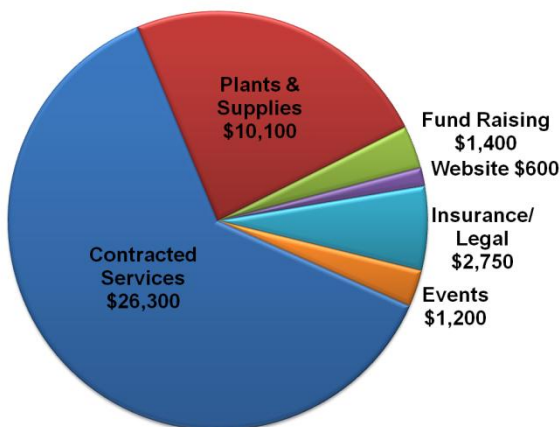


2011 ACTUAL REVENUE

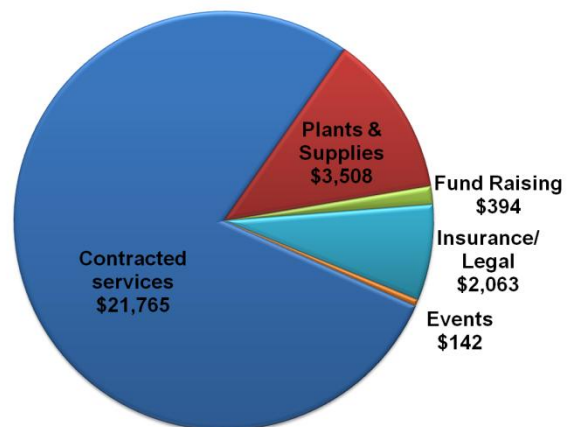


Expenditures for the year totaled just under \$28,000 with 78 percent of funds spent on contract services to maintain Greenway plantings. Contracted services for 2011 included spring top dress mulching, fertilization of shrubs and perennial and annual beds, pruning of shrubs, and inoculating ash trees to prevent the invasion of the Emerald Ash Borer. About 91 percent of all funds, including the funds for contracted services, were used for Greenway maintenance and plants.

2011 EXPENSE BUDGET



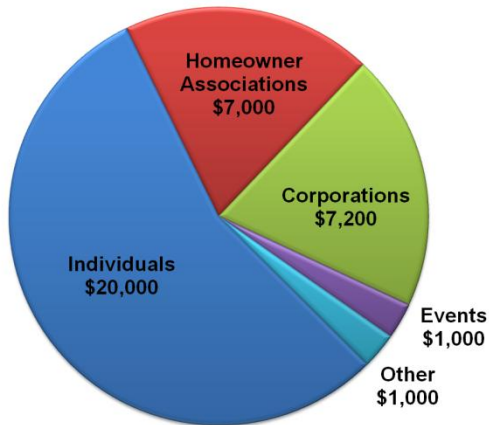
2011 ACTUAL EXPENSES



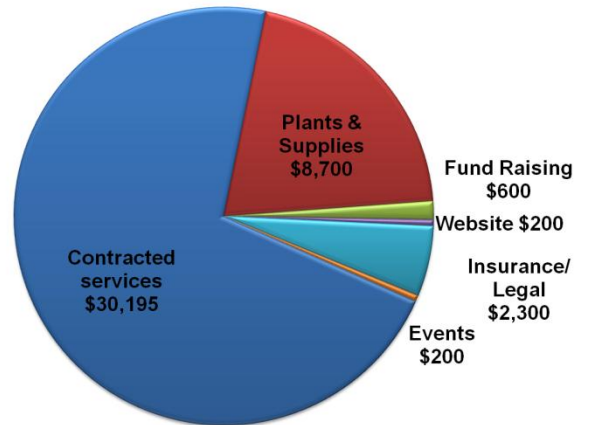
2012 BUDGETS

In 2012, the Association anticipates increasing its spending on the Greenway to just over \$42,000. This increase reflects more spending for plants and some new or biennial expenses for contracted services. Over 92 percent of all funds are targeted to maintain trees and shrubs and provide annual and perennial plantings. As in 2011, nearly all of the Association's revenues must be raised from private donors.

2012 REVENUE BUDGET



2012 EXPENSE BUDGET



DONORS

CORPORATE GIFTS

Citizens for a Loring
Park Community
Hyatt Regency
Minneapolis
IBM
Loring Kitchen and Bar
Thrivent Financial for
Lutherans
Foundation
Village Green
Eitel Building City
Apartments

INDIVIDUAL GIFTS

BENEFACTOR \$500 and Above

Bob and Nancy Anderson Family Fund
of The Minneapolis Foundation
Kay Constantine
Paula Vesely

ADVOCATE \$250 - \$499

Richard Anderson and Ellen Dubuque
John Beal and Barbara Brin
Donald and Elizabeth Davies
Carol Fitzpatrick
John and B.J. French
John and Jan Grunewald
Ray Harris
Peggy Hunter and Doug Wallace
Norman Jensen
Mary McEvoy and Terence Fruth
Helen Metz
Richard and Jan Sandberg
Joyce Sheffer
John and Karen Somers
Richard and Carole Wiederhorn

ASSOCIATE \$100 - \$249

Fred Aden
Jon and Jean Albrightson
Winnie Anderson
Karen Bachman
Paul Barber
Anita Bennett and Ron Christianson
Michelle Biros
Gary Blegstad
Patricia Bloodgood and Chris Cleveland
Virginia and Larry Bradford
Mark and Carissa Brown
Richard Brunning
John and Linda Cesnik
Hal Chader

CONDOMINIUM ASSOCIATION GIFTS

1225 LaSalle
Loring Green East
Loring Green West
Loring Way

ASSOCIATE \$100 - \$249 (continued)

Charles Cleveland
Ogden and Jane Confer
Pat and Jack Davies
Richard and Lois Demers
The Reverend Michael L. Edwins
Helen and James Ehrlich
Jean Emanuelson
Thomas A. Foster
Maryfaith and Michael Fox
Flo Francis
Lee Frelich
Paul Frye
Stephen Gangstead
Mark and Sherri Ginther
Bess Gold
John and Carol Gretz
Jo Gustafson
Jacquelyn Hauser and Thomas Tinkham
Elisabeth Heefner
Dianne Heins
Don Helgeson and Sue Shepard
Grace and Doug Herr
Lila and Harry Jacob
Edward Jones and Blair Setterlund
Miriam Karmel and Wm. Price
Merry Keefe
Jean Kennedy
Gerald Kollodge
Michele and Thomas Krenn
John Kueck and Susan Viking-Kueck
Rollie Langer
Dorion and Albert Macek
Martha Maguire
Beverly Marlow
DeeDee Martinson
Bob and Wanda McCaa
Steve Millikan
Joseph and Yvonne Mullen
Marian Murphy



ASSOCIATE \$100 - \$249 (continued)

Bruce and Jane Nelson
Melanie Nelson
Edward and Deanna Newman
Jo Nichols
Glyn Northington
Barbara and Victor Olson
Cathryn Olson
Faith and Steve Oremland
Don and Florence Ostrom
Donald Pastor and David Goldstein
Ronald G. Perrier
Sharon L. Plett
Viv Rengstorff
Frederick Requa and Lois Freeberg-
Requa
Mary and Peter Ritten
Martin and Sylvia Sabo
Patty and Barney Saunders
Doris Skalstad
Wallace and Marilyn Small
Kevin and Cheryl Smith
Frank J. Sorauf
Bill and Roxanne Soth
Marcia and John Stout
Marcia and Joe Sullivan
Alice and Harry Tashjian
Jean Toll
Thomas and Diana Ursin
Sally and Jon Westby
James Wickham
Jane U. Young

FRIEND \$1 - \$99

Anonymous (2)
Mike Addy and Nancy Johnson
Eric Anderson
Nettie Andrews
Thomas and Mary Beaumont
Beverley Benson
Margaret Berget
Tony Bergmann-Porter
Kristin and Steven Berns
Keith Boe
Judith Breuer
Julie Bridgeford
David Brink
Martha and Joel Brown
Joan Brownell
Jan and Paula Buckner
Carol Clarke
Ray and Jo Connelly
Jeanne Corwin
Larry and Gay Dennison
Howard Dixon
Dzintra Dombrovskis
Kitty and Dave Dornfeld
D. Ann Douglas

FRIEND \$1 - \$99 (continued)

Vicki and Stephen Dunn
Judy Ericksen
Hope Esparolini
Richard and Adele Evidon
John Fesler
Joseph Fleischman
Jeff and Donna Fox
Byron and Shirley Frank
Betsy Fruth
Lawrence and Lois Gibson
Curtis Gilmore
George and Elly Haidos
Joanne Halsey
David and Marlys Harens
Verna and David Heiberg
Alexander Hill
Sylvia Horwitz and Peter Truran
Sally Howard
Andrew Jellinger
Allan and Margaret Johnson
Dennis and Carol Johnson
George and Marilyn Johnson
Patricia Kane
Radmilla T. Klashnya
Virginia Kremen
Mark and Michelle Krogh
Karen and Bernie Kunkel
Patrick Kush and Tricia Simo Kush
Lora Landers
LaVonne Landsverk
Caroline Lappin
Susan Lasoff
Harold Levinger and Sheila Field
Jim and Lila Little
Lawrence and Lois Markus
Sally and James Martineau
Mary McGuire
Curt Micka
Jeanne Mock
Jim and Fran Mullin
David Munn
Nick Naumann
Dennis and Susan Nielsen
Dallas and Patricia Nortwen
Alyce A. Omer
William Opsahl
Marilyn Osterkamp and Allan Press
John and Carole Peterson
Pat and Gene Radecki
Robert Rundorff
Rosemarie and Morton Ryweck
Kay and David Samuelson
Harvey and Janis Sarles
Jennifer Scholler
Irving and Janet Shapiro
William K. Sheffield
Madeleine and Eric Sorensen



FRIEND \$1 - \$99 (continued)

Ellen and Arne Sovik
Arturo Steely
Tom and Judy Stein
Janet and Ray Sterling
Evelyn T. Struthers
Jerrie and William Sudderth
Sandy and Jerry Svec
Helen Swedien
Gordon and Faythe Thureen
Roger and Kay Thyr
A. Richard Tow
Jim and Ruth Van Meter
Marsha and Kurt Weidenhammer

IN-KIND GIFTS

INDIVIDUAL

Richard Anderson
Hal Chader
Bess Gold
Tracy Karney
Jennifer Scholler
Paula Vesely
Jon and Sally Westby

IN-KIND GIFTS

CORPORATE

American Burger Bar
Aveda Sanctuary
Brit's
Buca di Beppo
Cafe Luxx
Capital Grille
Caribou Coffee
CRAVE
CVS/pharmacy
Dunn Brothers
Groceries & Deli on Harmon
Hyatt Regency Minneapolis
Joe's Garage
Kowalski's
La Belle Vie
Loring Kitchen and Bar
Loring Way
Lotus
Lunds
One Ten Grant
Solera
Starbucks
Stayfit Athletic Club at the Hyatt
Regency
Zipp's Liquor

